

# TOP-ROLL GYM DIVIDER

A Top-Roll Gym Divider is the ideal way to divide space in facilities with low ceiling heights. The curtain rolls neatly on the drive pipe so the stacking dimension is only 14".

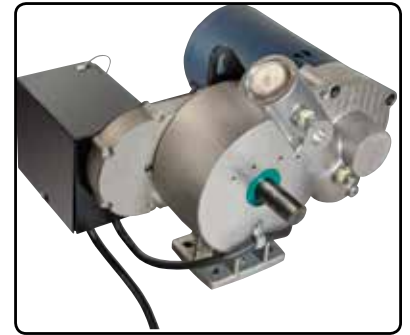
Draper's clean design does not require belts, cables or complicated torsion arms to operate the curtain. Our Top-Roll uses a single ¾ hp motor located on one end of curtain, which simplifies the wiring diagram and saves money on the electrical wiring.



- All electrical connections are made at and stay at ceiling level
- The motor is mounted externally allowing it to cool properly.
- Solid vinyl available in 18 oz. weight, with all horizontal welds. Any combination of mesh and vinyl height available. Total hanging weight is, on average, ¾ lb. per sq. ft.
- Outer edge hems are turned and welded to prevent fraying.
- Maximum width 100', maximum height 30'



Extra-wide carrier brackets with non-abrasive rollers.



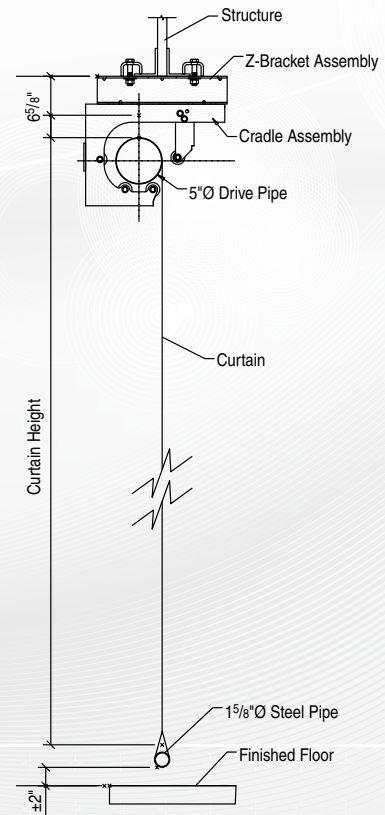
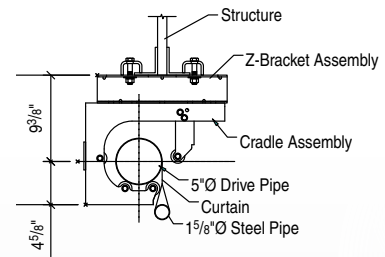
Electric winch provided with Fold-Up, Roll-Up, and Top-Roll gym dividers.



Blue Water YMCA, Port Huron, MI.  
Architect: TMP Associates, Inc., Bloomfield Hills, MI.  
Photography: Jill Brososky, Jeff Bell Photography, Ft Wayne, IN.



Wheelersburg K-12 School, Wheelersburg, OH.  
Architect: Tanner Stone & Co., Portsmouth, OH.  
Photography: Javier Jarrin, Cincinnati, OH.



**For maximum safety, specify Draper's Curtain Lok on Top-Roll Gym Divider. See page 16 for details.**

Dimensions, drawings and specifications available at:  
[www.draperinc.com/go/TopRollDivider.htm](http://www.draperinc.com/go/TopRollDivider.htm)